

# Treating with flexibility.



## ZEISS EyeMag medical loupes



**ERGRA-ENGELEN**  
Brandekensweg 13 Unit 9  
B-2627 SCHELLE  
TEL 03/8881140 FAX 038881436  
info@ergra-engelen.be



[zeiss.com/loupes](http://zeiss.com/loupes)

Seeing beyond



# ZEISS EyeMag Medical Loupes

## Precision at first sight

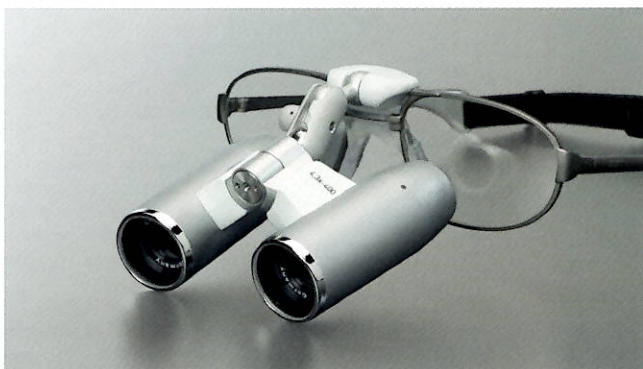
Medicine today requires meticulous attention to detail. Seeing tiny anatomical structures is not possible without correct magnification and high-quality optics. Clarity and precision enable successful treatments and optimal quality care.

EyeMag® medical loupes from ZEISS offer premium optical performance for first-time and experienced users. Equipped with LED illumination, the visualization tools provide great image clarity and depth of field over the entire treatment area. Easy to use and comfortable to wear, ZEISS EyeMag medical loupes combine elegance with functional design in a wide range of working distances and magnification levels.



### ZEISS EyeMag Smart

- With 2.5x magnification, ideal for applications that require a large field of view and excellent depth of field
- Available with titanium eyeglass frame or fashionable sports frame



### ZEISS EyeMag Pro F and ZEISS EyeMag Pro S

- Edge-to-edge sharpness with up to 5x magnification, ideal for users with high magnification needs
- Available with titanium eyeglass frame or comfortable headband



### ZEISS EyeMag Light II

- Combined with high-quality ZEISS optics, the powerful ZEISS EyeMag Light II provides crisp detail recognition and an unaltered view of tiny structures
- Perfect fit for all ZEISS EyeMag medical loupes

# ZEISS EyeMag Smart

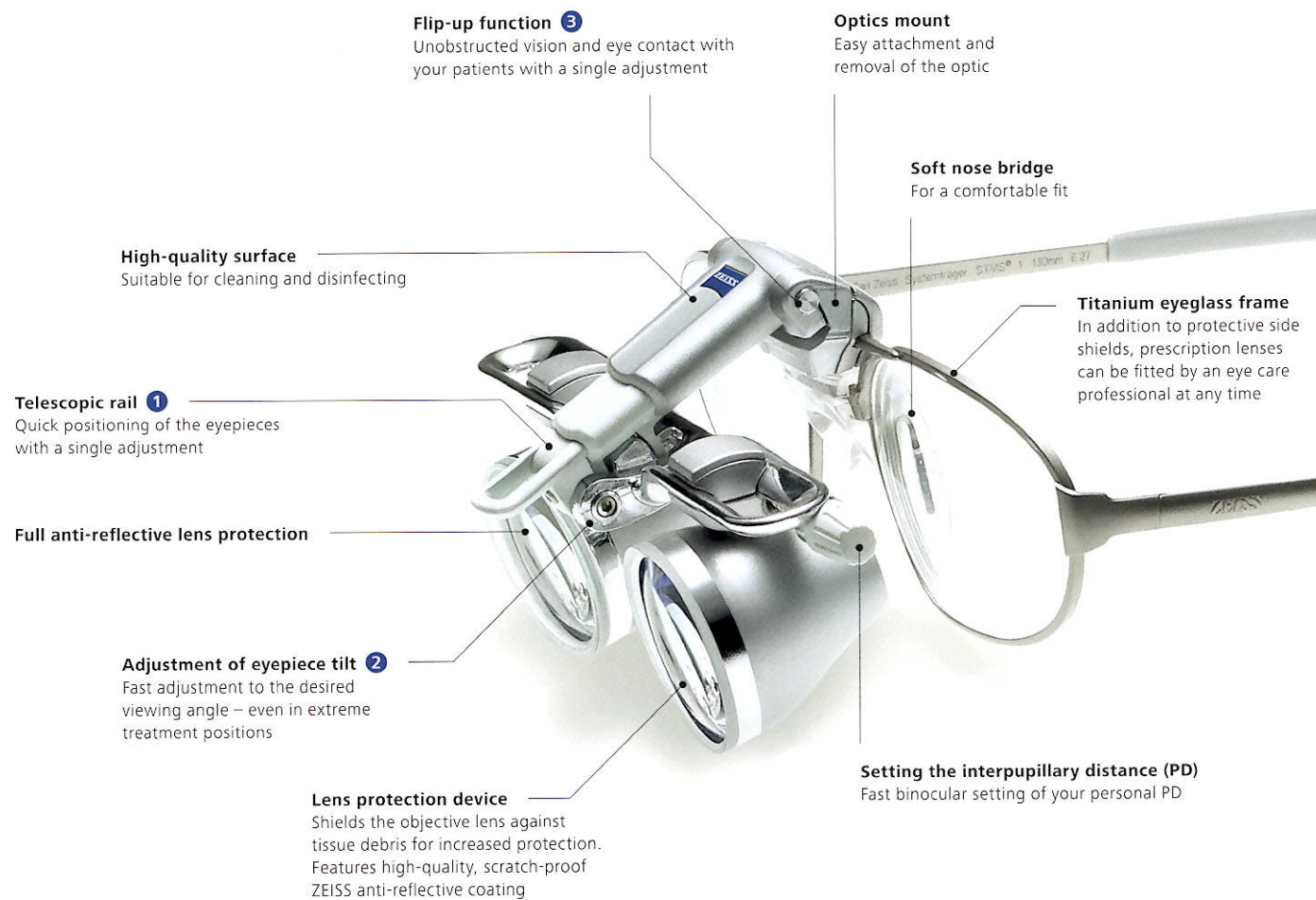
See the whole picture with stunning detail

With 2.5x magnification, ZEISS EyeMag Smart medical loupes provide images with impressive color rendition of anatomical structures. The large field of view and striking depth of field allow easy visualization of the entire treatment area. When magnification is not needed, the loupe can simply be flipped up, offering the wearer an unobstructed view.

Available in an elegant, lightweight titanium or sports frame, ZEISS EyeMag Smart medical loupes feature a range of settings for flexible tilt and angle views and a comfortable, ergonomic fit. Quick and easy to adjust, the medical loupe settings remain stable. The result: the ZEISS EyeMag Smart is a good choice for users requiring a compact and easy-to-operate medical loupe.

## ZEISS EyeMag Smart

with titanium eyeglass frame



## ZEISS EyeMag Smart

with sports frame



### Style, function and comfort

ZEISS EyeMag Smart medical loupes are also available with a compact, lightweight and stylish sports frame, providing good wearing comfort during longer procedures. The curved lens design protects the wearer against splash and debris.

## ZEISS EyeMag Smart

for laser therapies



### Protection for laser procedures

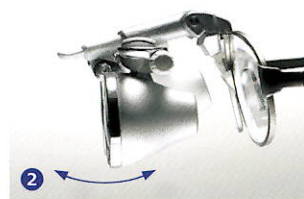
Special ZEISS EyeMag Smart medical loupes for surgeons performing laser therapies, offer high-quality laser protection\* combined with advanced visualization. This model meets laser safety requirements of the European standard EN 207.

\* A PROTECT-Laserschutz GmbH product



### Elastic strap

Ideal weight distribution provides a perfect fit



# ZEISS EyeMag Pro

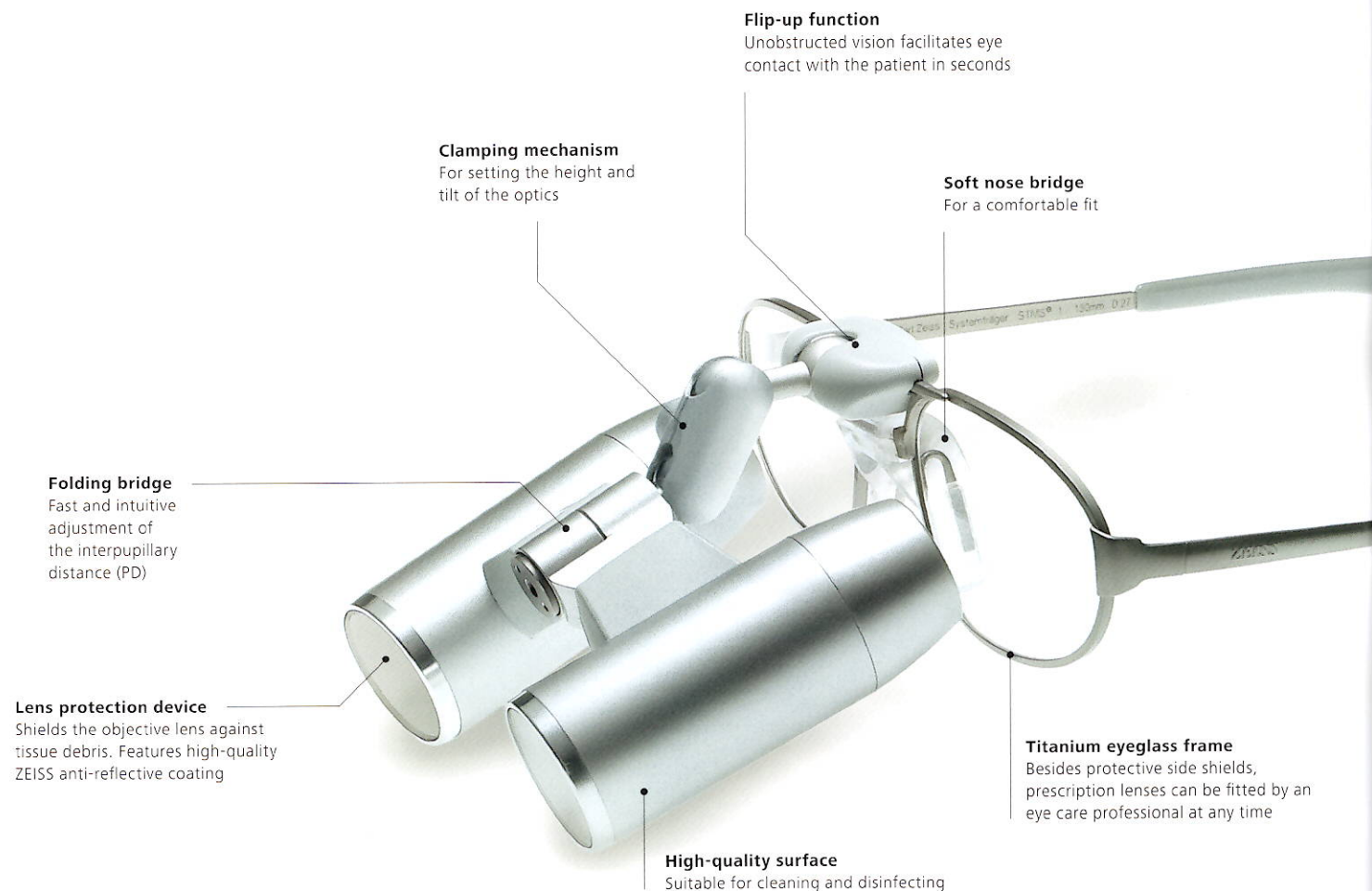
## Advanced visualization for professional applications

Experienced users with higher magnification needs will appreciate the advanced visualization capabilities of the ZEISS EyeMag Pro. Available in various magnification levels (3.2x–5x), ZEISS EyeMag Pro medical loupes provide high-contrast stereoscopic images with edge-to-edge sharpness for detail recognition and differentiation. When magnification is not needed, optics can simply be flipped up.

Mounted on either a lightweight titanium eyeglass frame (ZEISS EyeMag Pro F) or with a carrier system S (ZEISS EyeMag Pro S), the medical loupes offer settings for a wide range of tilt and angle views while supporting a comfortable, ergonomic working position. Settings are quick and easy to adjust and remain stable at all times.

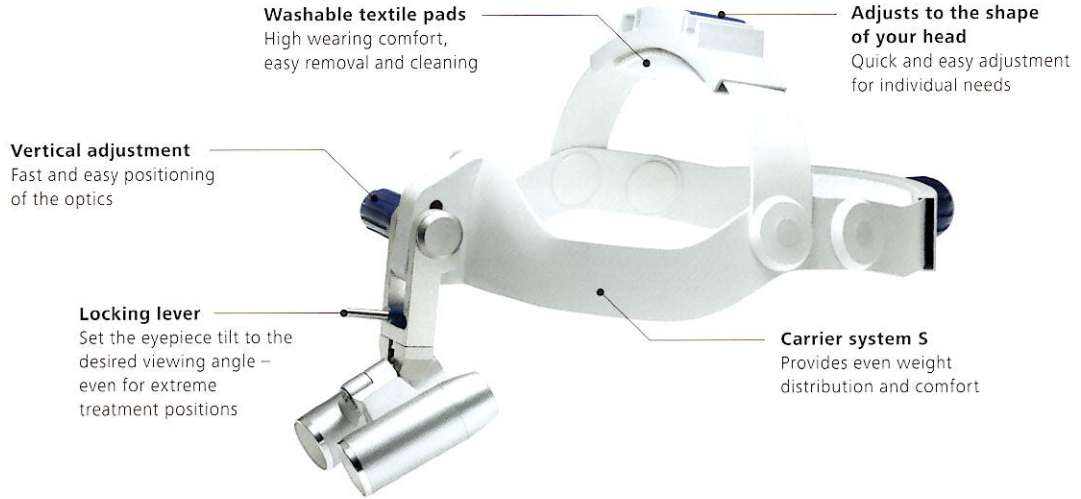
### ZEISS EyeMag Pro F

with titanium eyeglass frame



# ZEISS EyeMag Pro S

with carrier system S

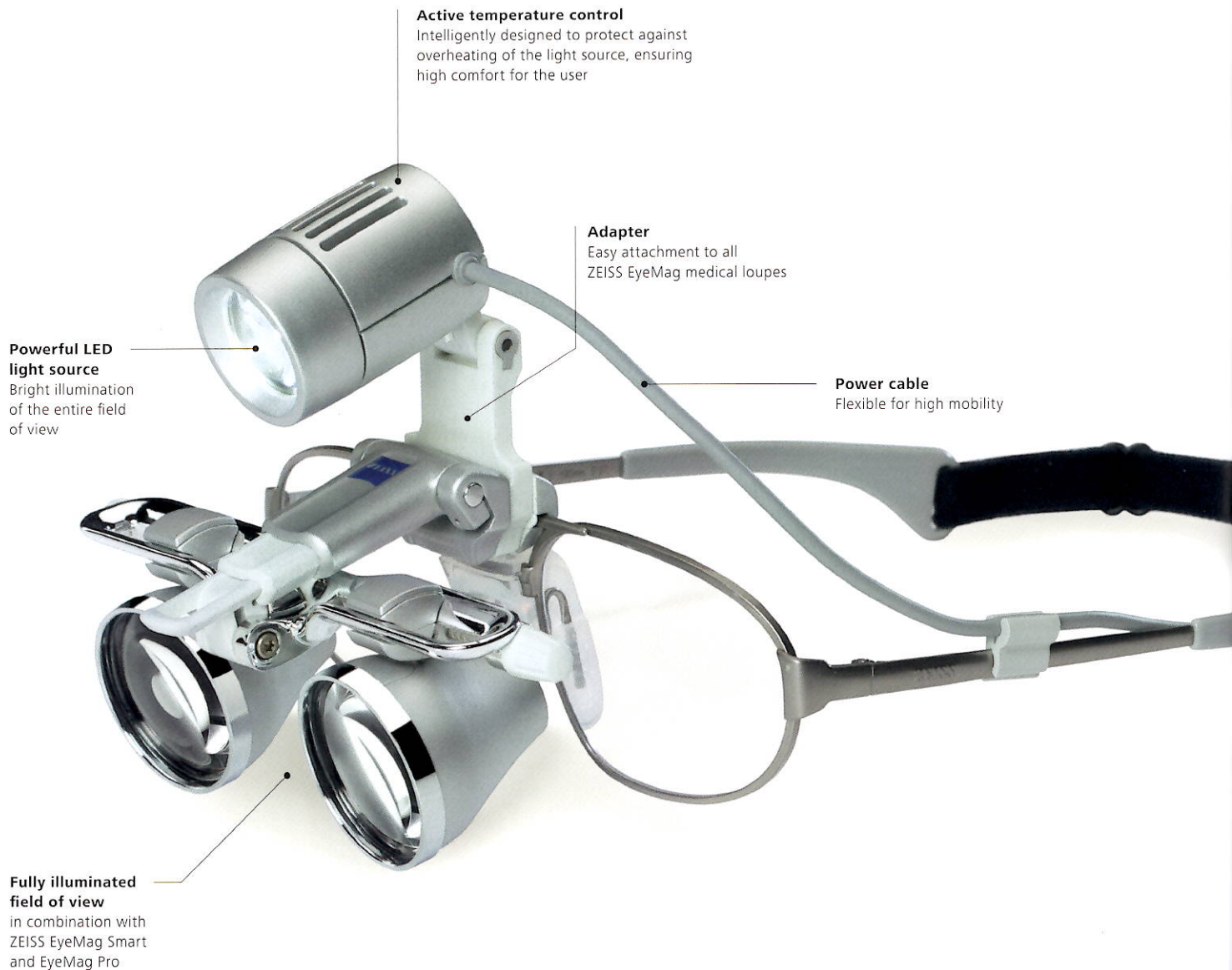


# ZEISS EyeMag Light II

## Lighting the way

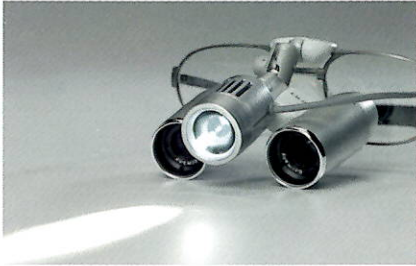
The powerful lighting of the ZEISS EyeMag Light II provides illumination intensity for high detail recognition. Combined with high-quality ZEISS optics, the LED illumination can support a clear, sharp view of tiny details and structures thanks to its close resemblance to daylight and even distribution of light.

Two powerful rechargeable battery packs and a charging cradle are part of the standard package allowing practically interruption-free work – 24/7. The compact, portable, and ergonomic design optimizes comfort for daily use across a wide range of procedures.

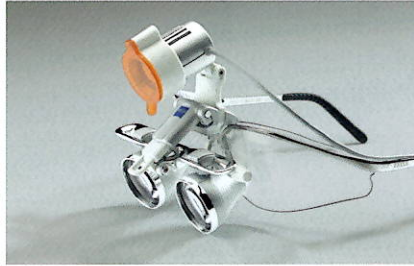




**Illumination as needed – flexible and mobile**



*In combination with ZEISS EyeMag medical loupes, EyeMag Light II offers almost coaxial light, resulting in minimal shadow formation.*



*Swing-in orange filter for ZEISS EyeMag Light II prevents premature curing of composite materials.*



*Two rechargeable battery packs come with a convenient charging cradle for practically interruption-free work.*

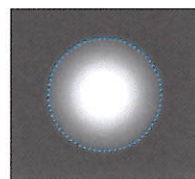


■ Battery uptime  
■ Battery charge time

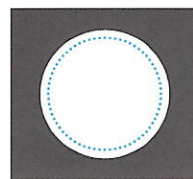
**Single button**  
3-step intensity control. The light intensity setting can be switched in steps of 33%, 66% and 100%

**Charge level indicator**

**Practical belt clip**  
for freedom of movement



*Conventional system*



*ZEISS EyeMag Light II*

Unlike illuminations with conventional lens configurations, ZEISS EyeMag Light II offers with its clearly defined illuminated field even and powerful illumination across the entire field of view of your ZEISS loupes.

..... Field of view

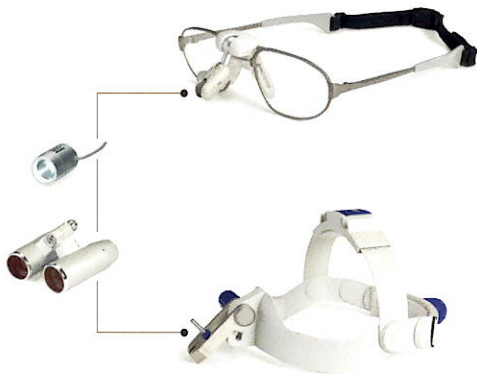
# Personalized magnification and illumination

Select the ideal medical loupe design and configuration for you



## ZEISS EyeMag Smart

- Flip-up medical loupes featuring a Galilean design
- 2.5x magnification provides large fields of view for comprehensive visualization of the surgical area
- Easy, intuitive operation – ready for use in seconds
- Comfortable, ergonomic fit
- Available with three different carriers:
  - ZEISS EyeMag Smart with titanium eyeglass frame,
  - ZEISS EyeMag Smart with sports frame and
  - ZEISS EyeMag Smart with laser protection\*
- Compatible with ZEISS EyeMag Light II LED illumination



## ZEISS EyeMag Pro F and ZEISS EyeMag Pro S

- Flip-up medical loupes featuring a Kepler design
- For users with high magnification demands
- Large selection of different models available in different combinations of magnification levels and working distances
- Available with two different carriers:
  - ZEISS EyeMag Pro F with titanium eyeglass frame and
  - ZEISS EyeMag Pro S with carrier system S
- Compatible with ZEISS EyeMag Light II LED illumination

\* A PROTECT-Laserschutz GmbH product



### Measure your working distance

Measure the typical distance from your eyes to the object of interest to determine the preferred working distance.

### Select the right combination

For the selected working distance, decide what combination of magnification and field of view will best suit your application. An overview of all fields of view and magnification levels is available on pages 12 / 13.



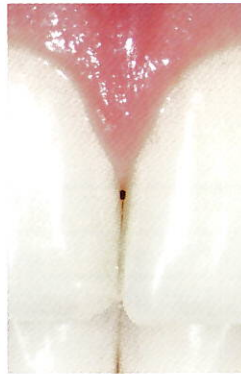
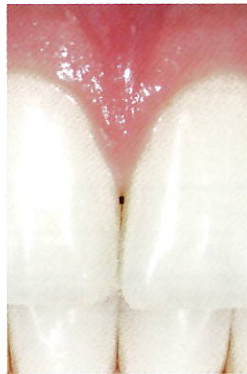
2.5x

3.2x

4x

4.5x

5x

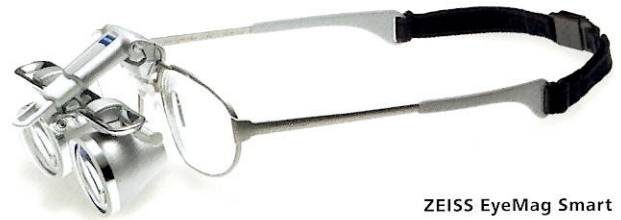


*Application image courtesy of Dr. Claudia Cia Worschech, Sao Paulo, Brazil*

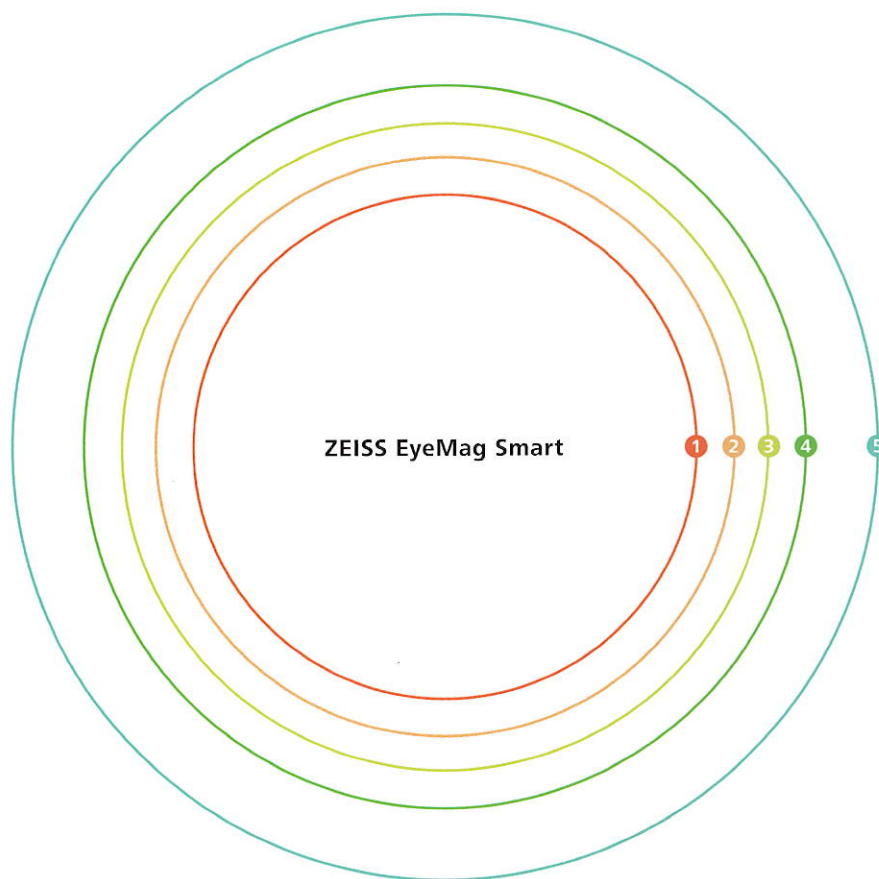
# Optical properties

## Fields of view (actual size)

The following fields of view are possible depending on the working distance and the desired magnification. These determine the selection of your individual medical loupes.



ZEISS EyeMag Smart



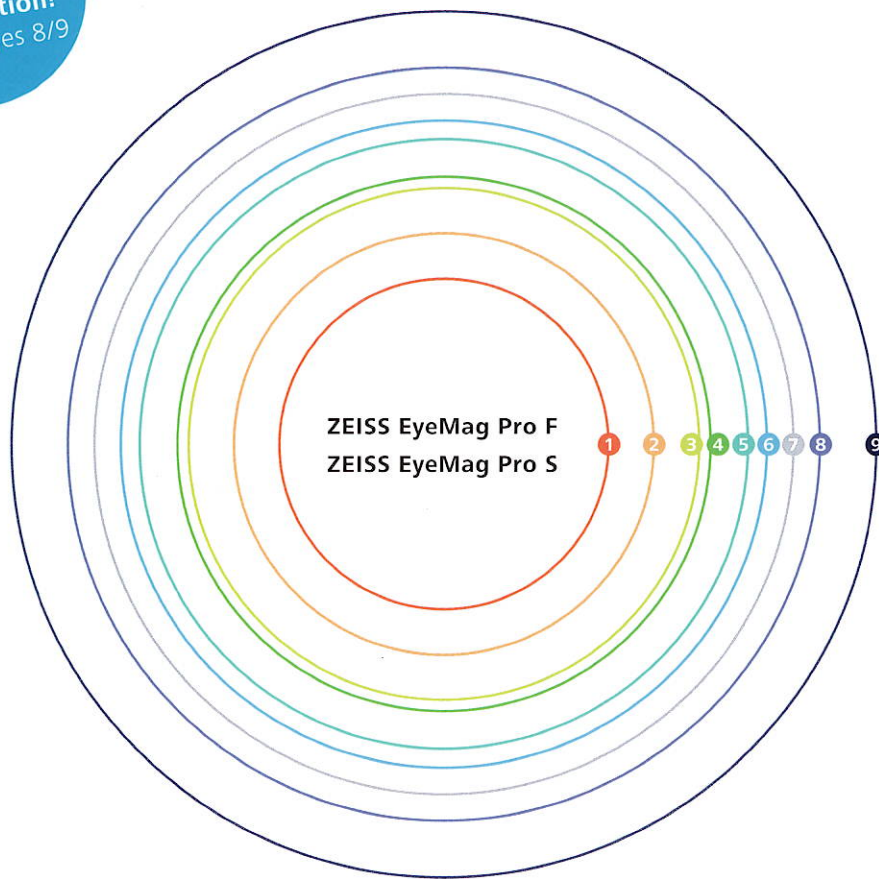
### Optical properties

Working distance (mm)	300	350	400	450	550
Working distance (inches)	12	14	16	18	22
Magnification	2.5x	2.5x	2.5x	2.5x	2.5x
Field of view (mm)	67	77	86	96	115
	1	2	3	4	5



ZEISS EyeMag Pro F

Don't forget  
the LED  
illumination!  
– see pages 8/9



**Optical properties**

Working distance (mm)	300		350		400		450		500	
Working distance (inches)	12		14		16		18		20	
Magnification	4x	5x	3.6x	4.5x	3.5x	4.3x	3.3x	4x	3.2x	4x
Field of view (mm)	56	44	71	56	86	68	100	81	115	93
	2	1	4	2	6	3	8	5	9	7

# Technical data

## EyeMag Medical Loupes from ZEISS

### ZEISS EyeMag Smart

Standard delivery package includes ZEISS EyeMag Smart with titanium frame, sports frame or sports frame with laser protection\*

Optics	Featuring a Galilean design
Carriers	Titanium eyeglass frame Sizes: S, M, L with elastic strap and soft nose bridge Sports frame with elastic strap and soft nosepiece Sports frame featuring laser protection and eyepiece protection, with elastic strap and soft nosepiece
Lens protection device	Shields the objective lens against splashes and particles Features high-quality, scratch-proof ZEISS anti-reflective coating
Contact guard	Sterilizable to reliably swing loupes up and down
Side shields for ZEISS EyeMag Smart	Lateral protection against splashes and particles
Soft case	High-quality, shock-proof protection for your medical loupes and accessories



### ZEISS EyeMag Pro F and EyeMag Pro S

Standard delivery package of ZEISS EyeMag Pro F and EyeMag Pro S

Optics	Featuring a Kepler design
ZEISS EyeMag Pro F Carrier	Titanium eyeglass frame Sizes: S, M, L with elastic strap and soft nose bridge
ZEISS EyeMag Pro S Carrier	Carrier system S which can be adjusted to wearer's head
Lens protection device	Protects against splashes and particles with ZEISS anti-reflective coating
Contact guard	Sterilizable to reliably swing loupes up and down
Side shields for ZEISS EyeMag Pro F	Lateral protection against splashes and particles
Soft case	High-quality, shock-proof protection for your medical loupes and accessories



\* A PROTECT-Laserschutz GmbH product

## ZEISS EyeMag Light II

### Standard delivery package of ZEISS EyeMag Light II

Bulb housing	Powerful LED light source with integrated temperature control
Control unit	With 3-step intensity control (on three levels 100%, 66%, 33%), charge level indicator and belt clip
Adapter for ZEISS loupes	To attach the ZEISS EyeMag Light II LED illumination to ZEISS EyeMag Smart, EyeMag Pro F and EyeMag Pro S
Cable clip	To connect the lamp cable to the carrier
Soft case	High-quality, shock-proof protection for your light source and accessories
Swing-in orange filter for ZEISS EyeMag Light II	To prevent premature curing of composite materials for dental application
Light intensity	Up to 50,000 Lux (at distance of 300 mm)
Typical color temperature	Resembles daylight (approx. 5,700 Kelvin)
Weight of illumination head	19 g (0.6 oz)
2 batteries	2 lithium-ion batteries for fast charging
Battery charger	Processor controlled with country-specific power adapter
Operating time	Thanks to their short charge times the two battery packs enable continuous usage of the light during the entire workday





EyeMag medical loupes  
EyeMag Light II



**Carl Zeiss Meditec AG**  
Goeschwitzer Strasse 51–52  
07745 Jena  
Germany  
[www.zeiss.com/loupes](http://www.zeiss.com/loupes)  
[www.zeiss.com/med/contacts](http://www.zeiss.com/med/contacts)



Strator Laser One laser protection



**PROTECT-Laserschutz GmbH**  
Mühlhofer Hauptstraße 7  
90453 Nuremberg  
Germany  
[www.protect-laserschutz.de](http://www.protect-laserschutz.de)

en-INT\_30\_010\_00661 Printed in Germany. CZ-V/2021

The contents of the brochure may differ from the current status of approval of the product or service offering in your country. Please contact our regional representatives for more information.  
Subject to changes in design and scope of delivery and due to ongoing technical development. EyeMag is either trademark or registered trademark of Carl Zeiss Meditec AG or other companies of the ZEISS Group in Germany and / or other countries.

© Carl Zeiss Meditec AG, 2021. All rights reserved.